

1.04± Acre Commercial Site
Near Edison Mall, Ft. Myers, FL
FOR SALE



LOCATION: 2313 East Mall Drive, Fort Myers, FL 33901

STRAP: 36-44-24-P4-00017.0010

SIZE: 1.04± Acres or 45,186± Sq. Ft.

ZONING: C1 - Commercial

PRICE: \$550,000

COMMENTS: 1.04± acre corner commercial site adjacent to the 1.3± Million SF Edison Mall. Located just north of Colonial Blvd. with 296± ft. of frontage on Solomon Blvd. and 150± ft. of frontage on E. Mall Dr. Water/Sewer, Public Transportation available. Solomon Blvd. has signalized intersections at Colonial Blvd. and Winkler Ave. Colonial Blvd. is a service corridor connecting Cape Coral, with a population of 216,992 and Lehigh Acres, with a population of 114,287. Zoning allows a variety of commercial / professional uses. Adjacent 1.03± acres also available at \$450,000.

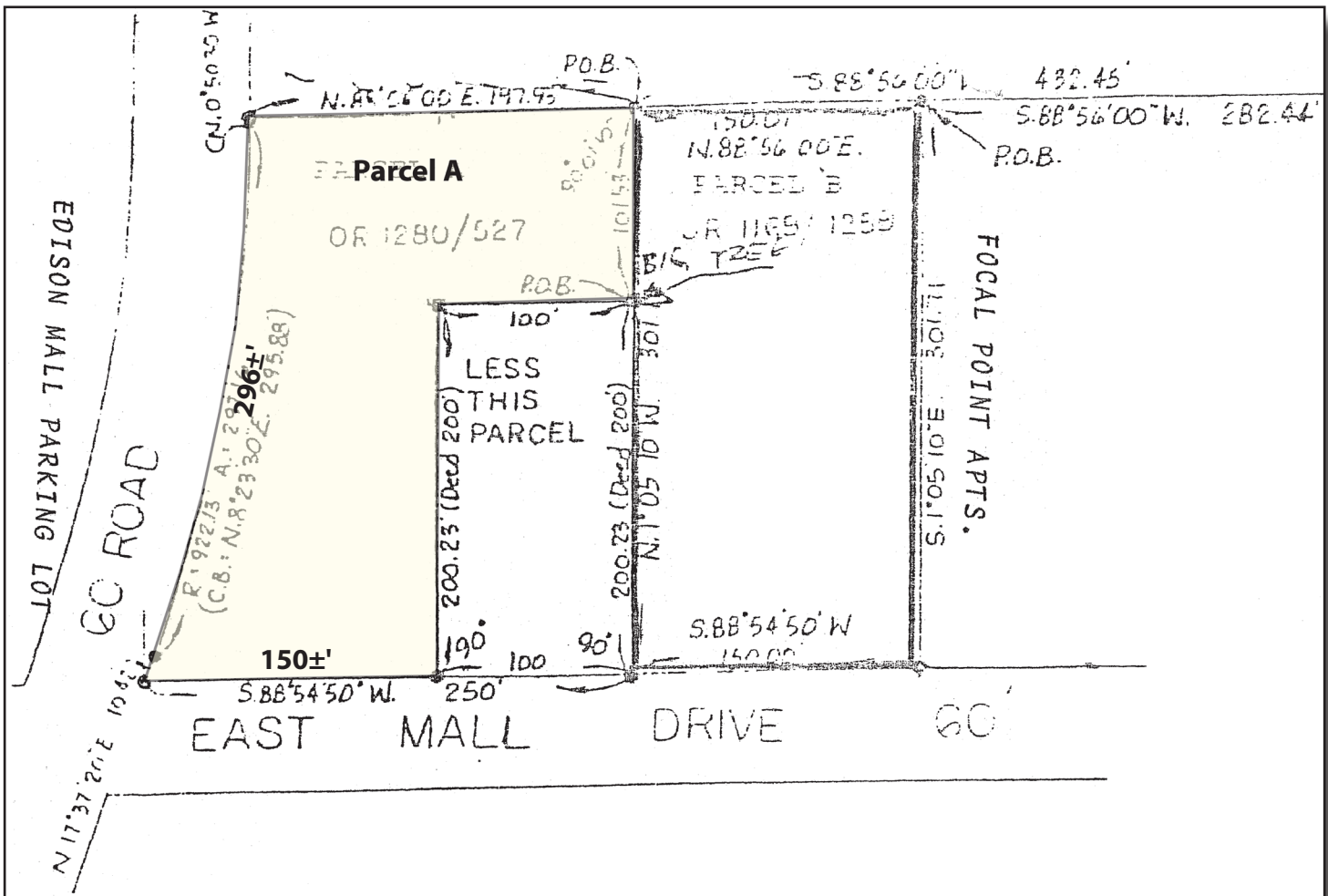
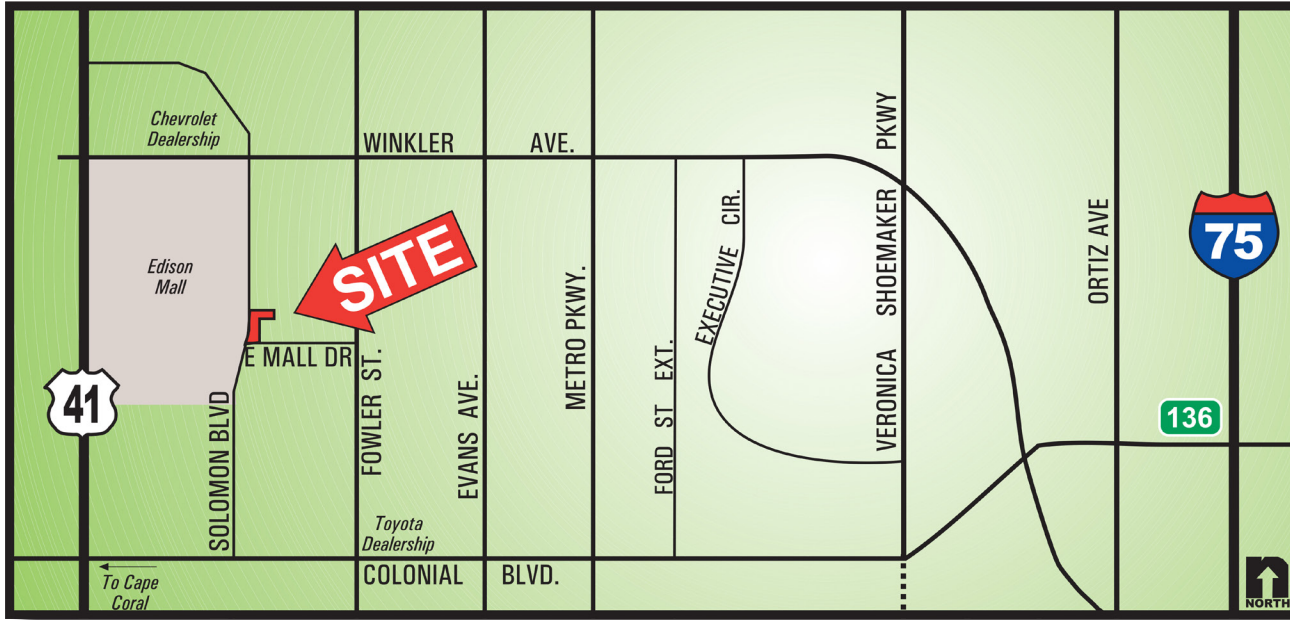
CONTACT: TOM WOODYARD

PHONE: (239) 425-6011

E-MAIL: twodyard@wa-cr.com

The statements and figures presented herein, while not guaranteed, are secured from sources we believe authoritative. Subject to prior sale, lease, withdrawal and price change without notice.

2313 East Mall Drive, Fort Myers, FL 33901



The statements and figures presented herein, while not guaranteed, are secured from sources we believe authoritative. Subject to prior sale, lease, withdrawal and price change without notice.